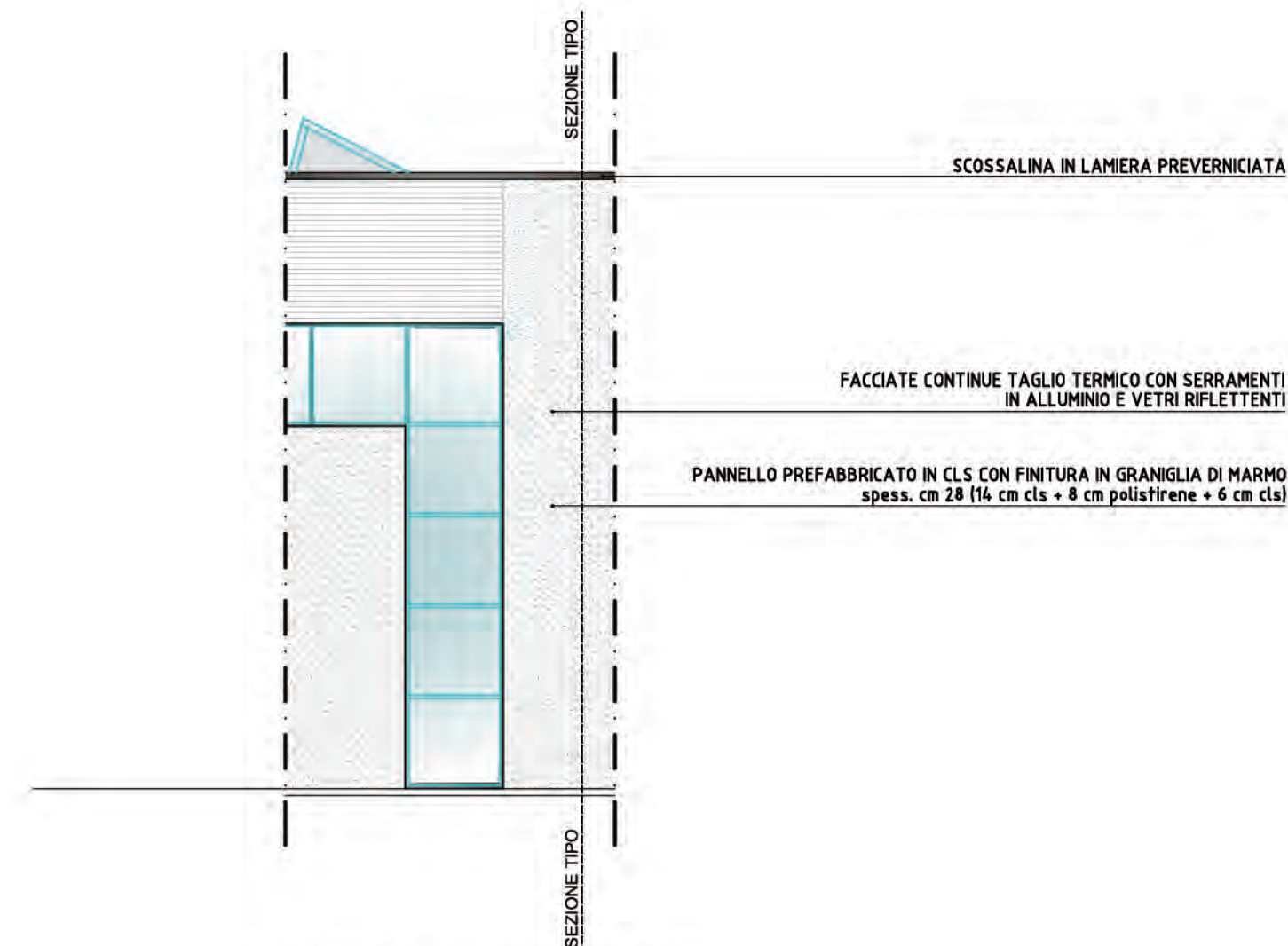
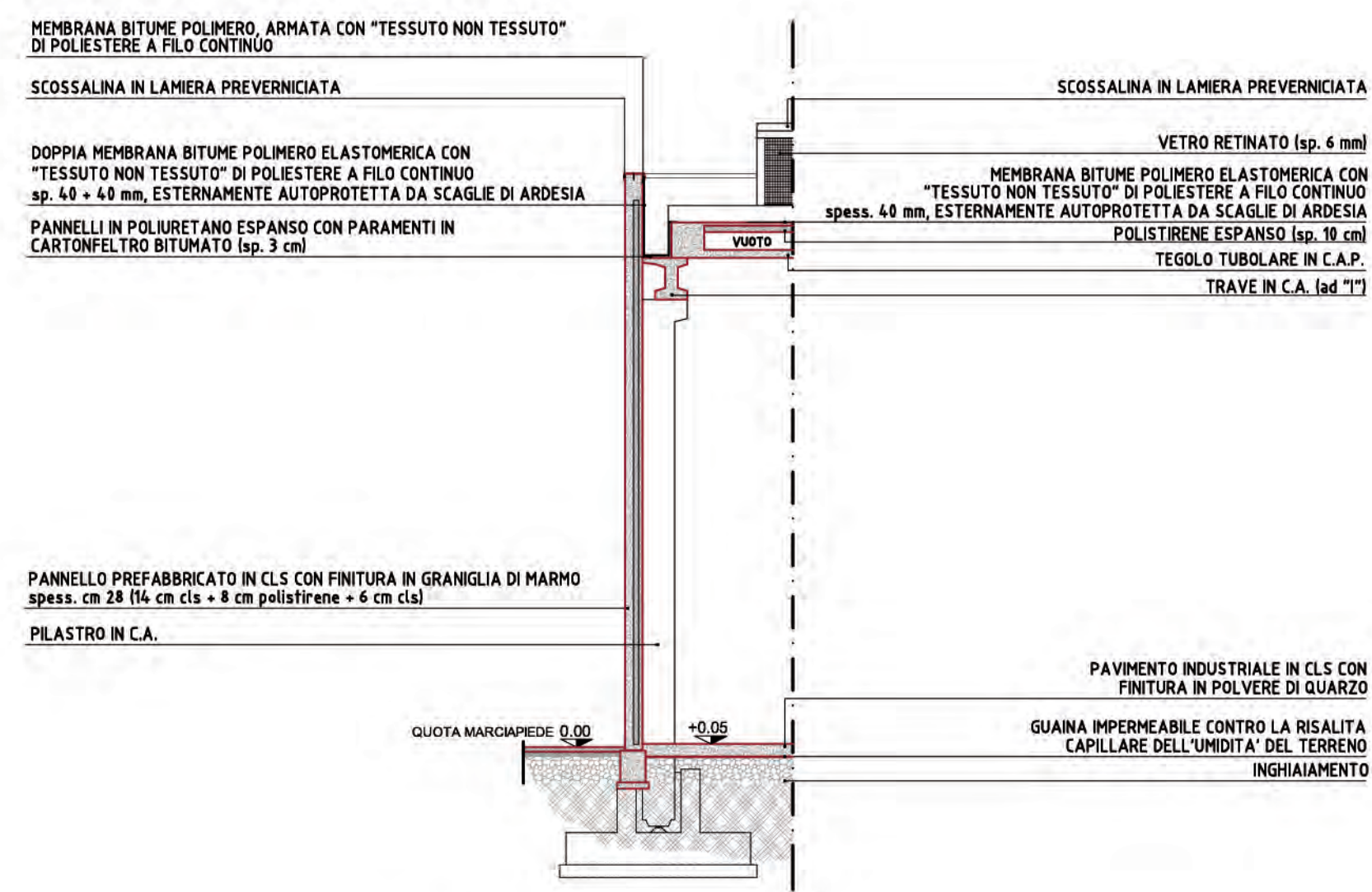


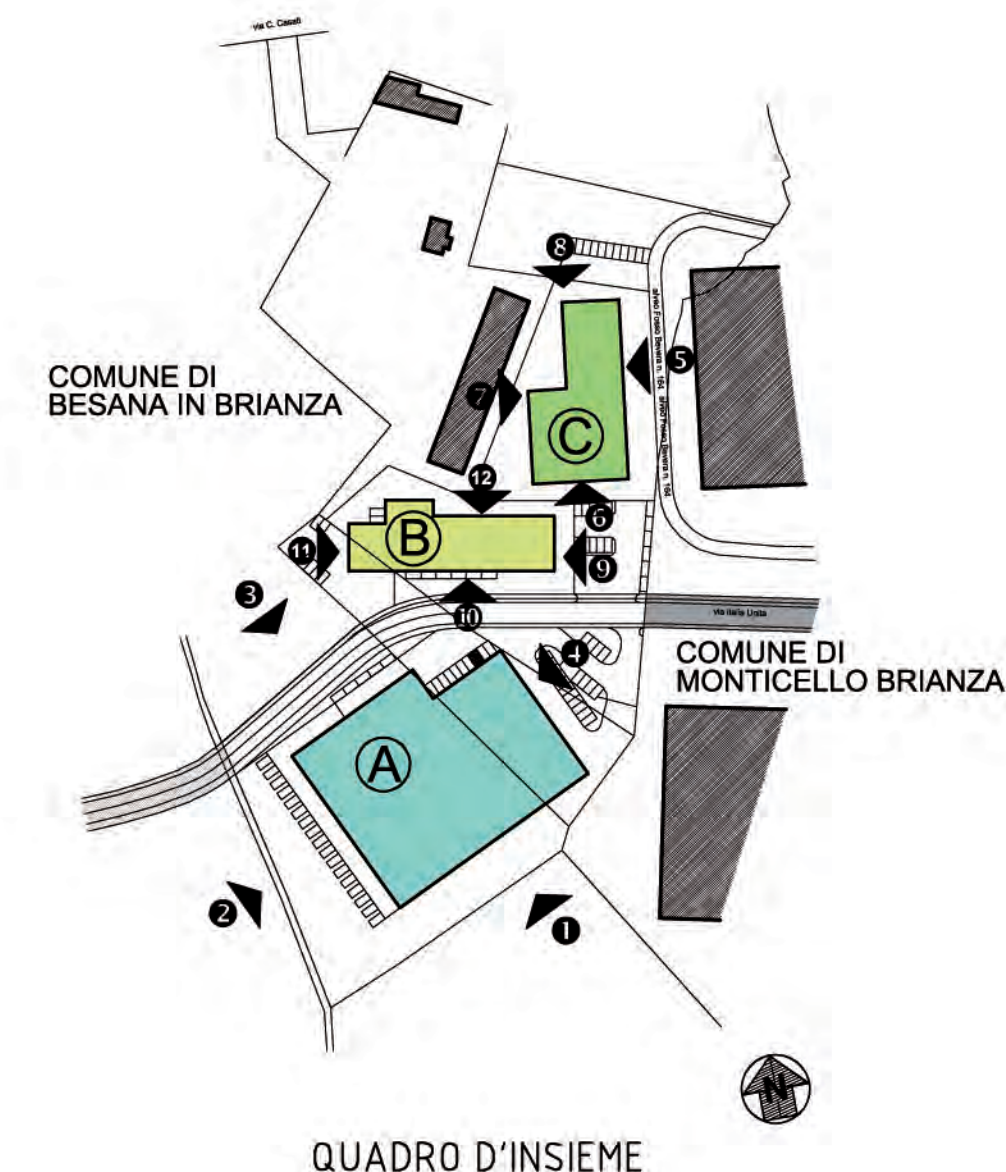
PARTICOLARI COSTRUTTIVI



STRALCIO PROSPETTO
scala 1:100



SEZIONE TIPO
copertura zona produttiva
scala 1:100

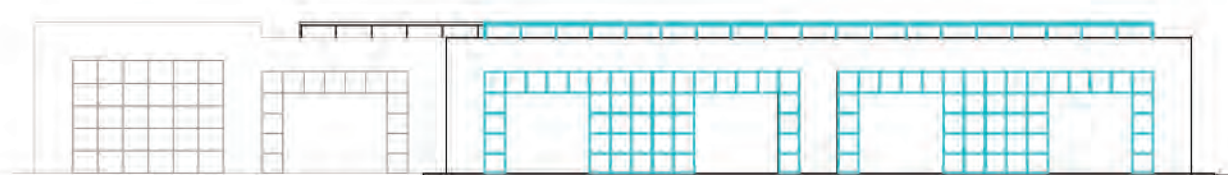


QUADRO D'INSIEME

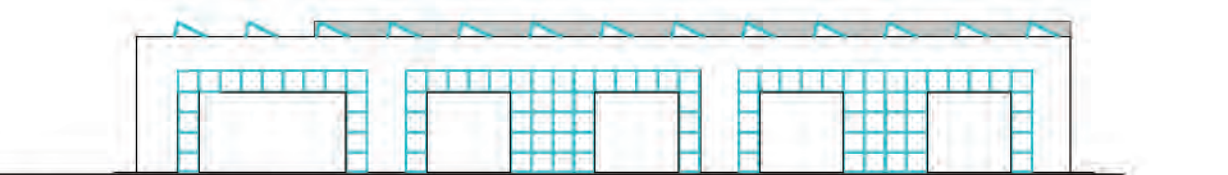
EDIFICIO "A"



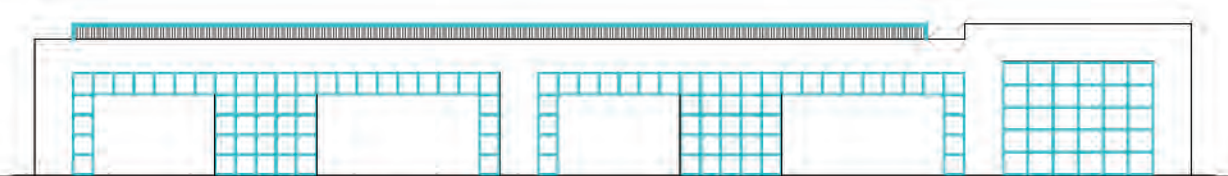
1 PROSPETTO EST - EDIFICIO "A"
scala 1:500



2 PROSPETTO NORD - EDIFICIO "A"
scala 1:500

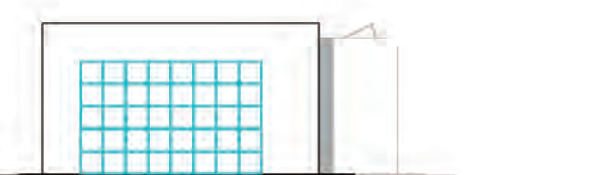


3 PROSPETTO OVEST - EDIFICIO "A"
scala 1:500

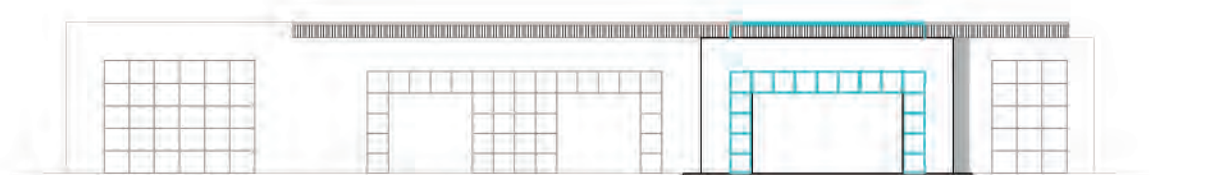


4 PROSPETTO SUD - EDIFICIO "A"
scala 1:500

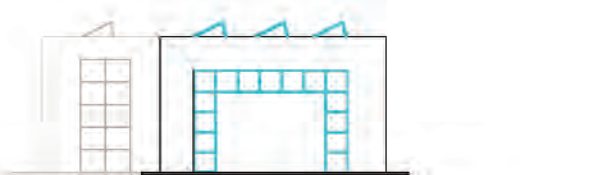
EDIFICIO "B"



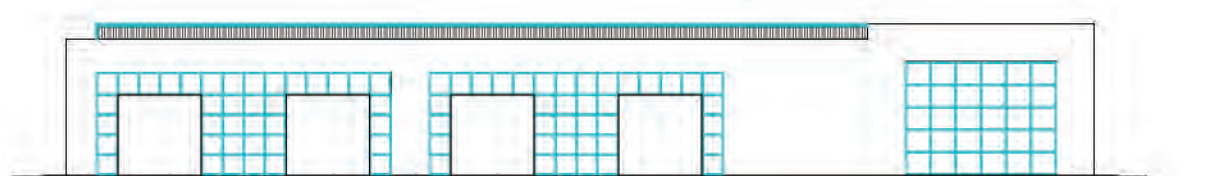
5 PROSPETTO EST - EDIFICIO "B"
scala 1:500



12 PROSPETTO NORD - EDIFICIO "B"
scala 1:500

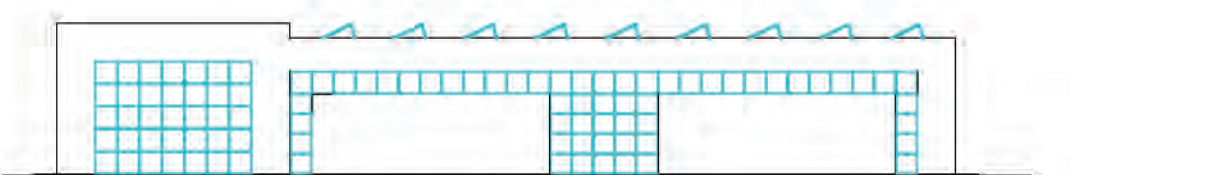


11 PROSPETTO OVEST - EDIFICIO "B"
scala 1:500

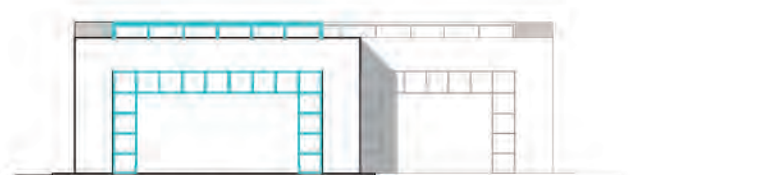


10 PROSPETTO SUD - EDIFICIO "B"
scala 1:500

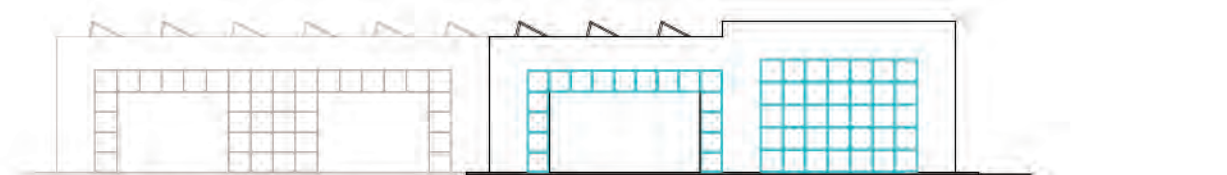
EDIFICIO "C"



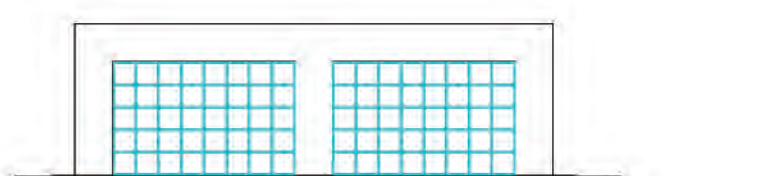
6 PROSPETTO EST - EDIFICIO "C"
scala 1:500



8 PROSPETTO NORD - EDIFICIO "C"
scala 1:500



7 PROSPETTO OVEST - EDIFICIO "C"
scala 1:500



9 PROSPETTO SUD - EDIFICIO "C"
scala 1:500

Dott. Gian Mario Mapelli
Geometra
Architetto
Via Umberto I n° 50
20056 Renate (MI)
Tel. 0362-925339
Cell. 335-8404630
e-mail gm.mapelli@libero.it

RE.VI.WA
Spreafico Arch. Walter
Via Santuario Inferiore, 37
23890 Boranga (LC) - Cell. 335-629952
P. IVA 03180430134
e-mail walter@re.vi.wa.it
www.architecto.com

PIANO DI LOTTIZZAZIONE
INDUSTRIALE
INTERCOMUNALE
(BAL_P1)

Comune:
Besana in Brianza (MI)
Monticello Brianza (LC)

PROGETTISTA: Arch. Gianmario Mapelli

Arch. Walter Spreafico

COMMITTENTE: CORBETTA CARLO

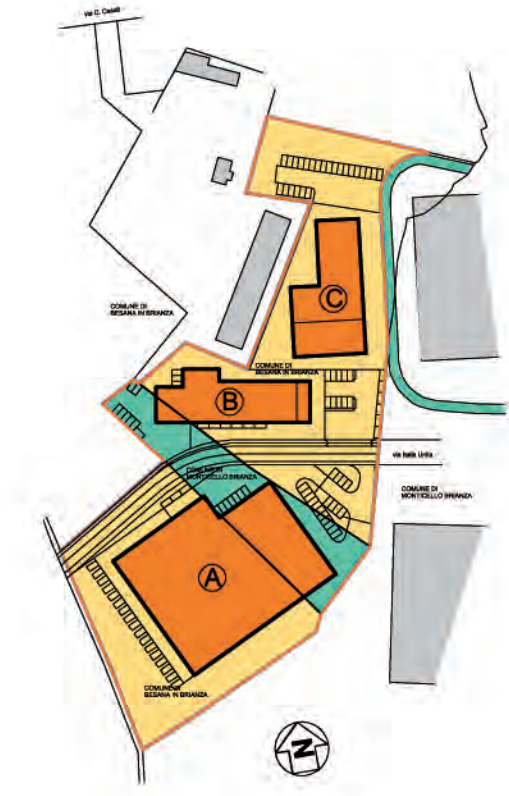
Società LA NETTATUTTO s.r.l.

Società ROVELLI ANTONIO s.p.a.

COMUNE: 20045 Besana in Brianza (MI)
23876 Monticello Brianza (LC)

PRATICA:/2009

Aggiornato: 05-08-10 09-10-15 10-06-16 19-09-16



Al sensi della vigente legislazione in materia e della tariffa professionale restano riservati al progettista i diritti di autore.

OGGETTO TAVOLA:

PROSPETTI
SEZIONE TIPO
STRALCIO PROSPETTO

SCALA: 1:100-500

DATA: 07 - 04 - 2009

TAV. n°:

07